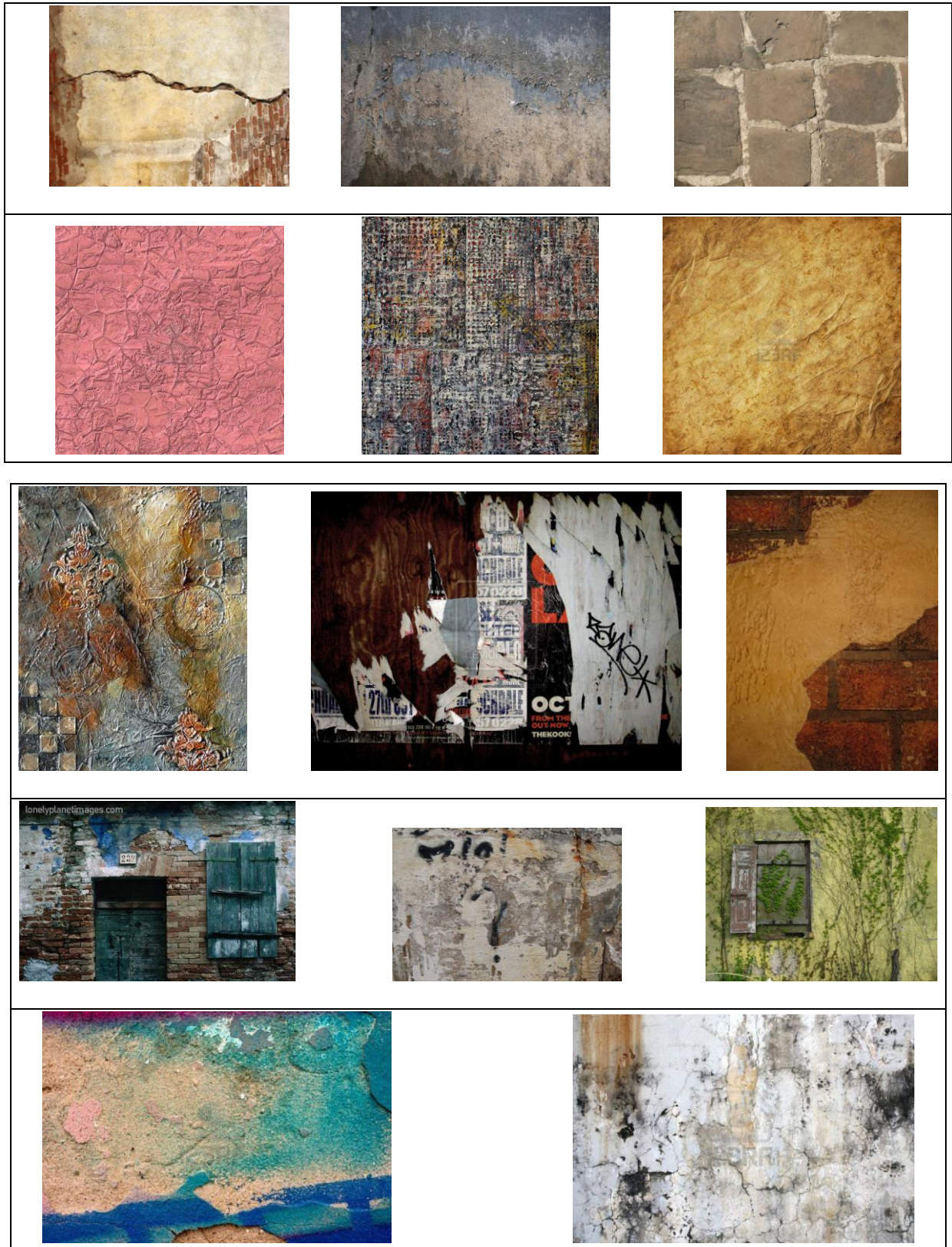


TERM 2: Texture – Painting 1

Old Wall



Surface:

Develop a large painting on a wooden panel. 800cm X 600cm. Glue support batons on back.

Prime with undercoat.

Theme:

Using references to decayed, flaking paint walls develop a composition based on the theme "Old wall". Think about how you can merge and integrate collage and assemblage to the surface of the painting. Try to develop an illusionistic representation of an old wall.

Think about contrast of textures, colour in the painting.

Mixed media:

Collect a range of materials and surfaces that can be integrated. Work with acrylic or oil.

Time frame:

Complete in one week.